

# RESUS IEM



MIAMI - CARIBBEAN ISLANDS  
6TH - 13TH JANUARY, 2024

A L O N G C O N V E R S A T I O N  
O N C A R D I A C A R R E S T

A I R W A Y



B E Y O N D A C L S  
E C P R / E C L S



R E S U S  
T R A U M A

# WORKSHOPS

[7TH JANUARY 0300PM - 0700PM]



**EAMS**

European Airway Management Society

0300 - 0330	AVOIDING CARDIAC ARREST IN THE PHYSIOLOGIC DIFFICULT AIRWAY
0330 - 0400	VENTILATION: HYPOXIA & HYPEROXIA ALLY OR KILLER!
0400 - 0430	AIRWAY DRUGS IN CARDIAC ARREST, THE BEST RSI 2024
0430 - 0700	<i>Hands On 1</i> PREPARING FOR AND PERFORMING AN AWAKE INTUBATION IN THE DECOMPENSATED PHYSIOLOGICALLY DIFFICULT AIRWAY (FLEXIBLE ENDOSCOPIC APPROACH) - WHY AND HOW
0430 - 0700	<i>Hands On 2</i> HOW TO TRANSITION FROM A POST ARREST SGA TO A TRACHEAL TUBE USING A FLEXIBLE SCOPE

# Airway



**INTUBATIEM**



# WORKSHOPS

[8TH MORNING 0800AM - 1200PM]



0800 - 0845	DAMAGE CONTROL RESUSCITATION & SURGERY SHOCK DEFINITION & CORE TREATMENT
0845 - 0930	TRAUMATIC CARDIAC ARREST: THE 'DIFFERENT' TWIN
0930 - 1200	TRAUMATIC CARDIAC ARREST & RESUSCITATION THORACOTOMY WORKSHOP <i>Hands On 3</i>
0930 - 1200	REBOA ENDOVASCULAR RESUSCITATION WORKSHOP <i>Hands On 4</i>

# WORKSHOPS

[ 8TH AFTERNOON 0200PM - 0600PM ]



	<i>Clinical Cases</i>
0200 - 0600	<b>CLINICAL CASES SIMULATION AND DEBRIEFING</b> <i>Hands On 5</i>



# Procedures



# WORKSHOPS

[ 11TH MORNING 0800AM - 1200PM ]



learn**ECMO**

0800 - 0830	BEYOND THE GUIDELINES: DRUGS & ELECTRICITY
0830 - 0900	ECOALS: INTEGRATED ULTRASOUND APPROACH & TEE APPROACH
0900 - 1000	<b>HYSTEROTOMY RESUSCITATIVE WORKSHOP</b> <i>Hands On 6</i>
1000 - 1200	<b>CLINICAL CASES SIMULATION AND DEBRIEFING</b> <i>Hands On 7</i>

# WORKSHOPS

[ 11TH AFTERNOON 0200PM - 0600PM ]

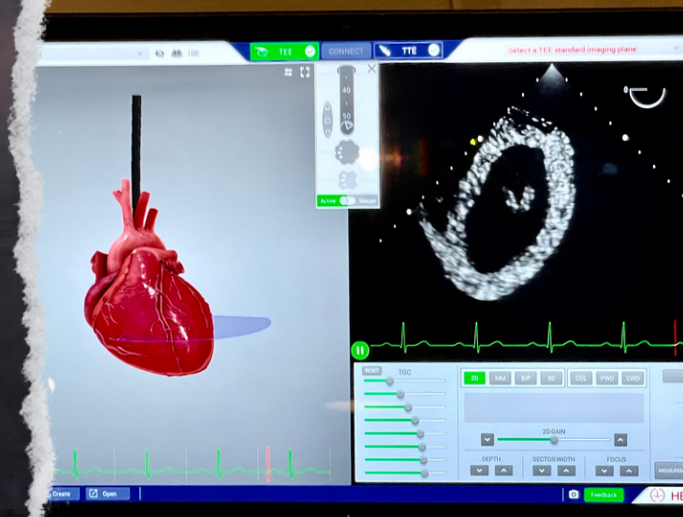


learnECMO

learnECMO

0200 - 0230	RESUSCITATIVE ECMO REVIEW & EVIDENCE
0230 - 0300	REBOARREST CONCEPT & EVIDENCE
0300 - 0400	ECLS/ECPR CANNULATION WORKSHOP <i>Hands On 8</i>
0400 - 0600	CLINICAL CASES SIMULATION AND DEBRIEFING <i>Hands On 9</i>





# WORKSHOPS

[ 12TH MORNING 0800AM - 1200PM ]



0800 - 0845	AIRWAY GUIDELINES AND BEST CHOICE IN THE MANAGEMENT OF THE PATIENT IN CARDIAC ARREST
0845 - 1100	<b>SALAD TECHNIQUE &amp; <i>Hands On 10</i></b> <b>GI MASSIVE HAEMORRHAGE MANAGEMENT TRAINING</b>
0845 - 1100	<b><i>Hands On 11</i></b> <b>NECK RESCUE - RECOGNISING AND MANAGING "CAN'T INTUBATE, CAN'T OXYGENATE"</b>
1100 - 1200	MINI SIM: REINFORCE YOUR AIRWAY STRATEGY

# WHO®



George Kovacs

Massimiliano Sorbello

Ryan Fransman

Rosanna Chorro

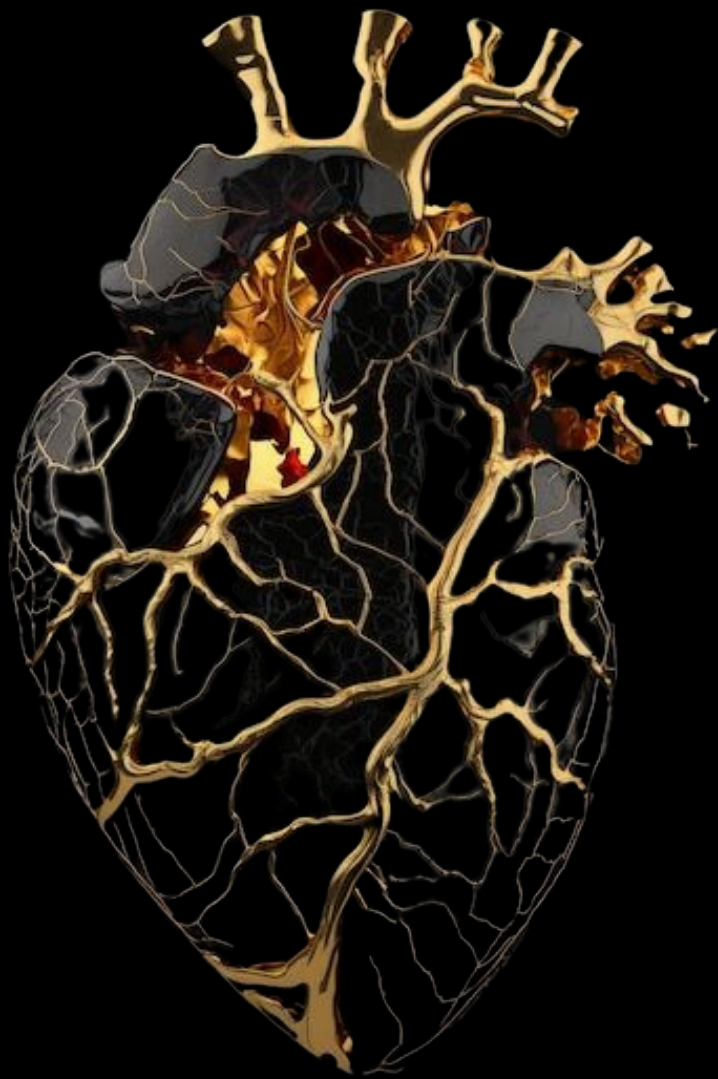
Andres Climent Rubio

Andrea Fletcher

Chris Bishop

Mario Rugna

Carmine Della Vella



# INTUBATEM

